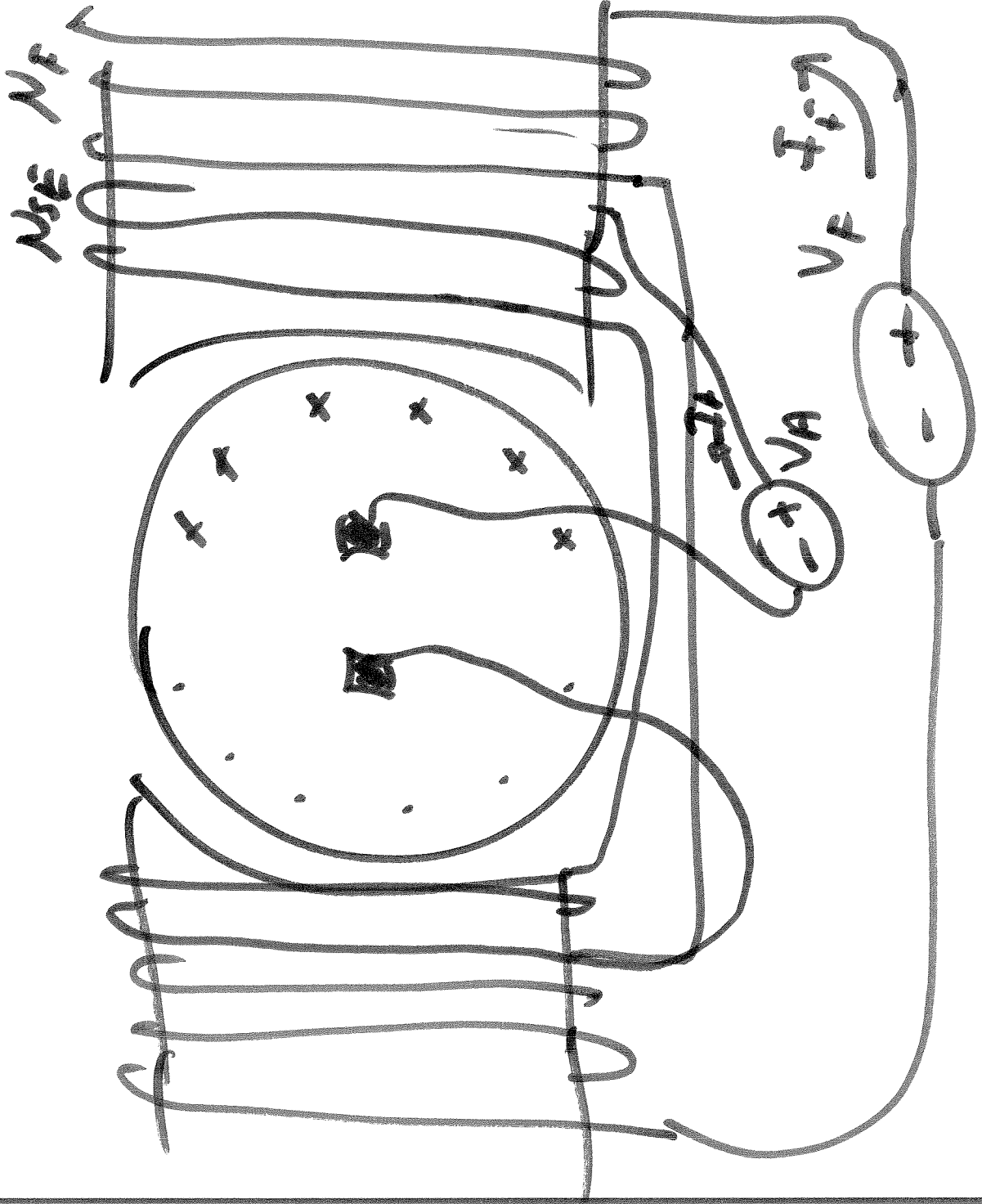
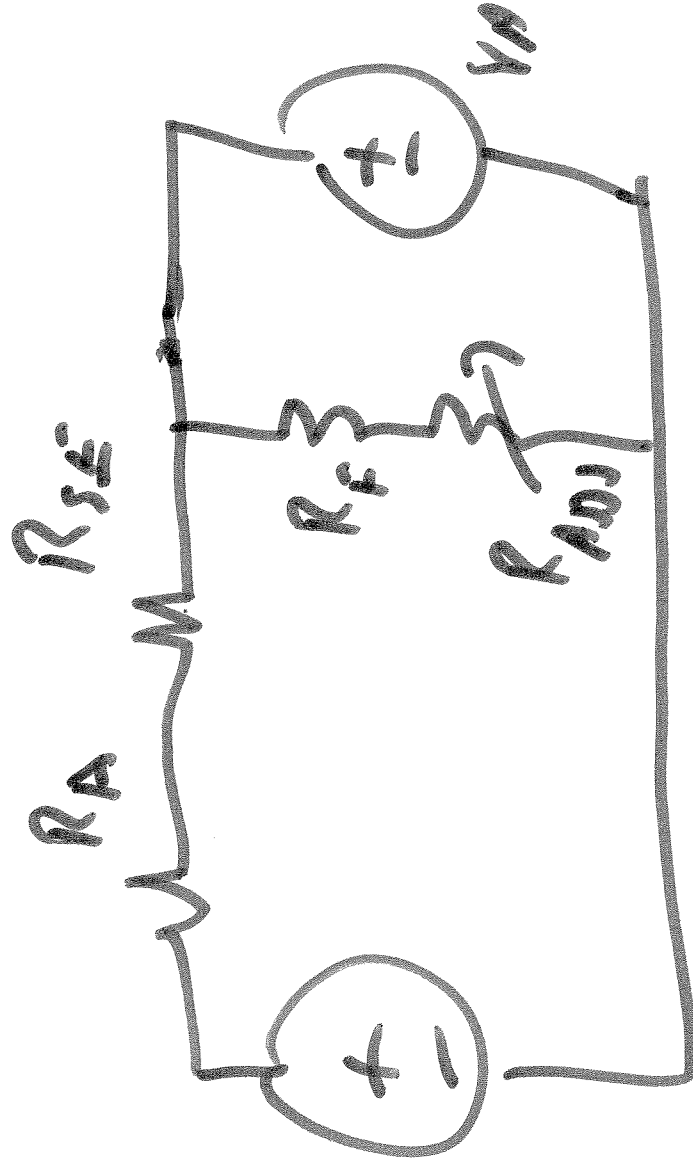


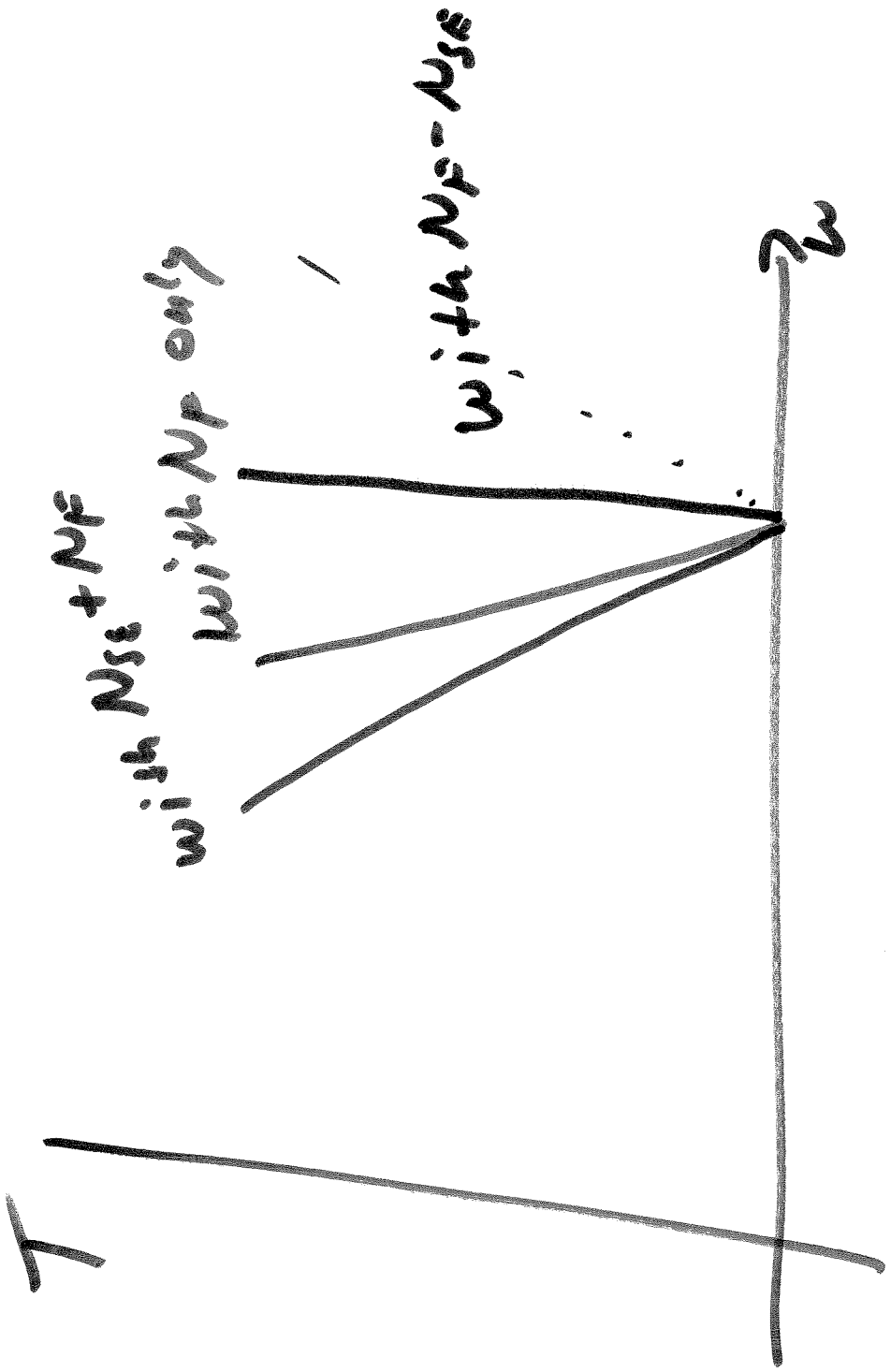
ECE 320 & ECE 329

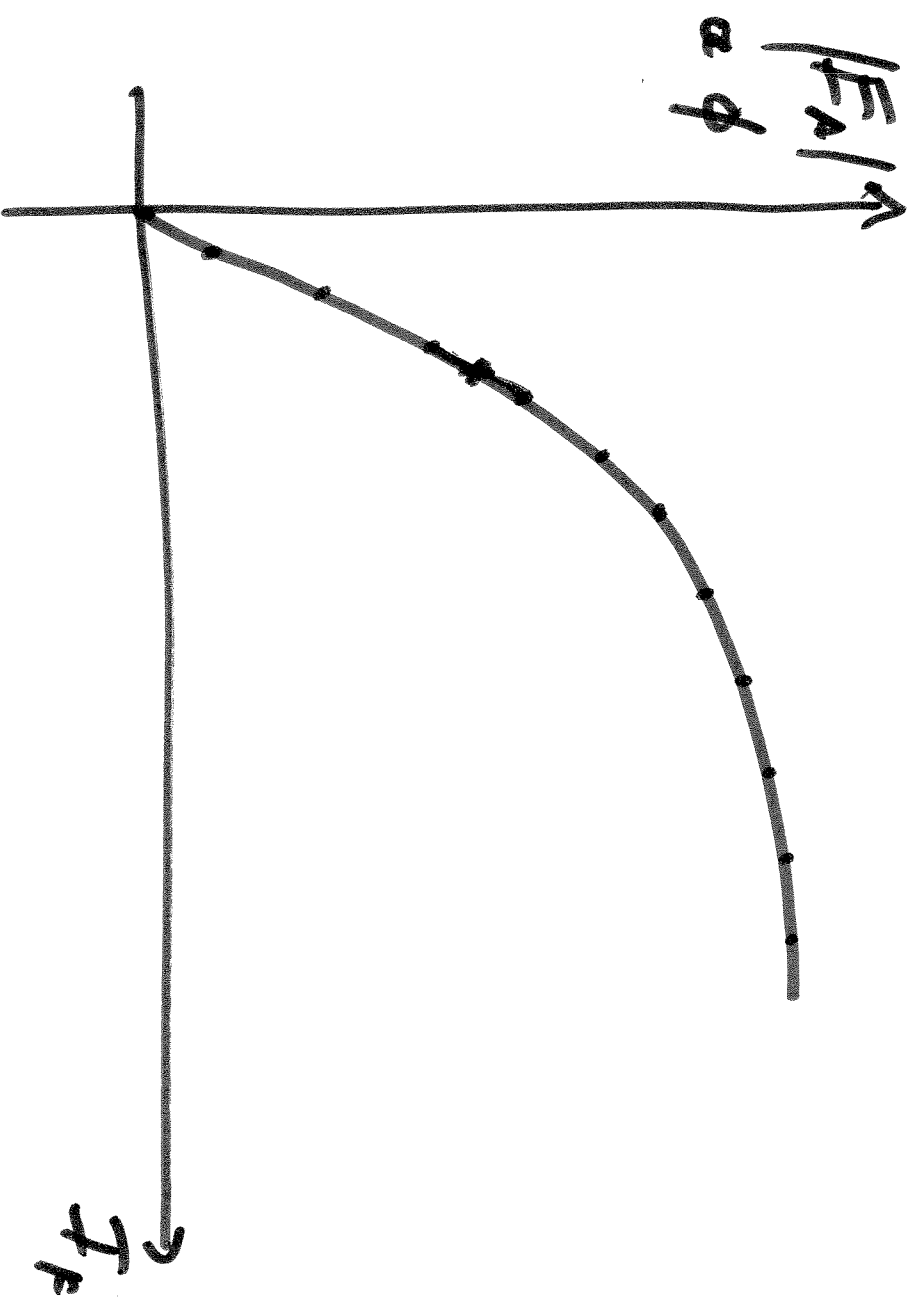
ENERGY SYSTEMS I
BACKGROUND STUDY IN ENERGY SYSTEMS

SESSION no. 29









ECE 320

Energy Systems I

Lesson 29

Guest Experts

DC Machines

When we weaken the field, the machine accelerates. This is true for every DC motor.

In a series machine, reducing the current weakens the field. There is only one current in a series machine.

Exam #2

DC Machines

1. Basic equations, 4 of them
2. Terms and anatomy for the machine
3. Torque, speed, efficiency, regulation, generated voltage
4. Problem solving

Monday 2 April handout

Monday 9 April due

Take home exam