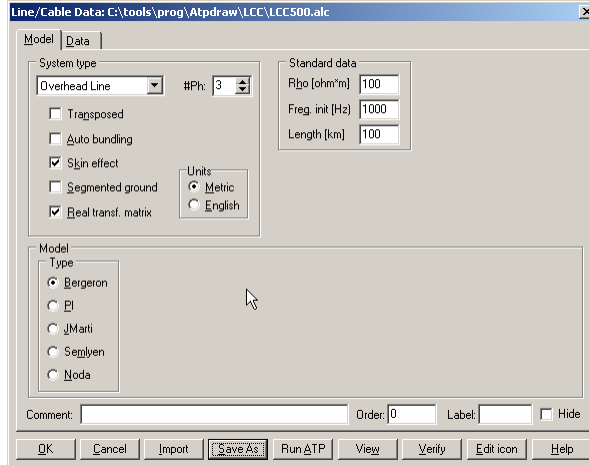
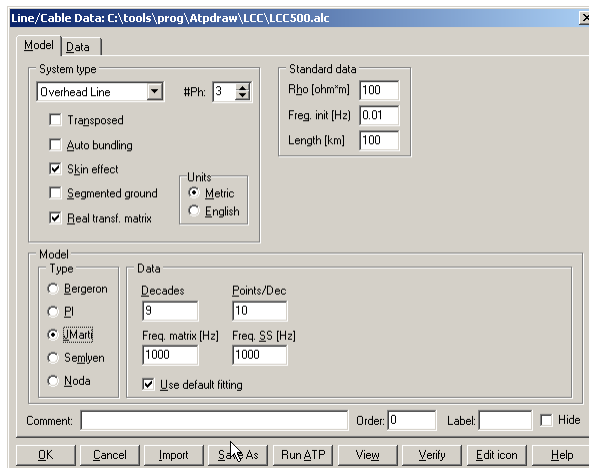


Line Model Page: Bergeron



Spring 2008

Line Model Page: J. Marti'



Spring 2008

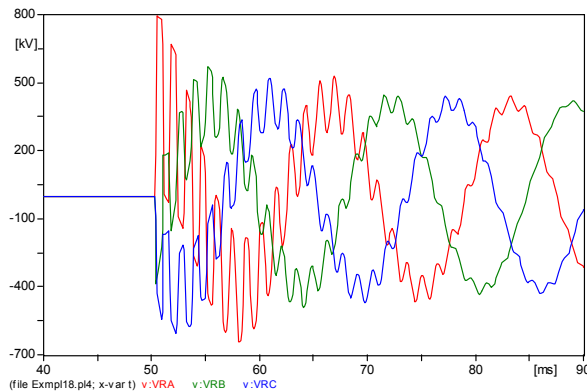
Line/Cable Data: C:\tools\prog\Atdraw\LCC\LCC500.alc

#	Ph.no	Fin [cm]	Rout [cm]	Besis [ohm/km DC]	Horiz [m]	Vlower [m]	Vmid [m]
1	0	0	1.529	0.0701	-10	20	20
2	2	0	1.529	0.0701	0	20	20
3	3	0	1.529	0.0701	10	20	20
4	0	0	0.475	3.75	-7	29	29
5	0	0	0.475	3.75	7	29	29

Buttons: Add row, Delete last row, Insert row copy, Move, OK, Cancel, Import, Save As, Run ATP, View, Verify, Edit icon, Help

Spring 2008

CP Line (3 phase energize)



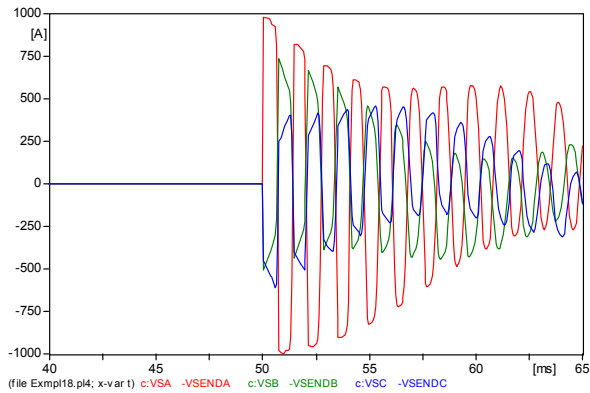
Spring 2008

U
 I

CP Line (3 phase energize)

ECE524

Lecture 27



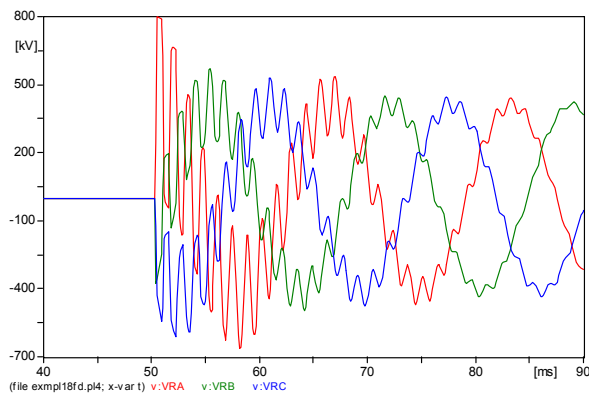
Spring 2008

U
 I

FD Line (3 phase energize)

ECE524

Lecture 27



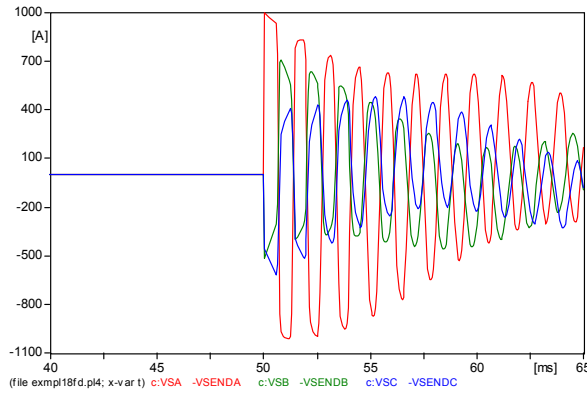
Spring 2008

U
 I

FD Line (3 phase energize)

ECE524

Lecture 27



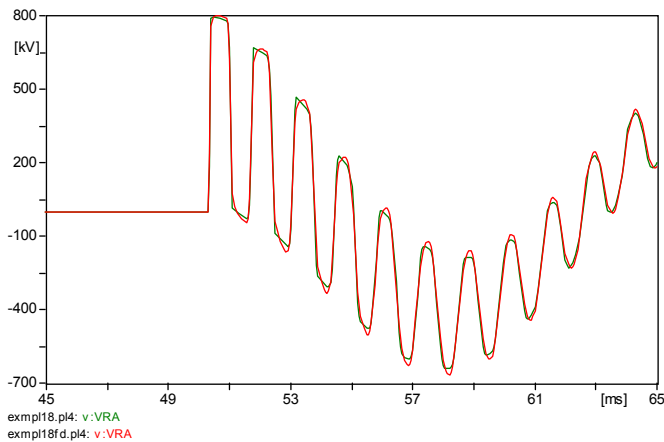
Spring 2008

U
 I

Voltages (3 phase energize)

ECE524

Lecture 27



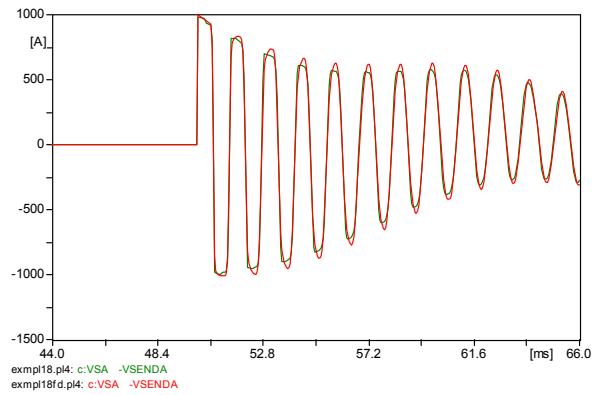
Spring 2008

**U
 I**

Currents (3 phase energize)

ECE524

Lecture 27



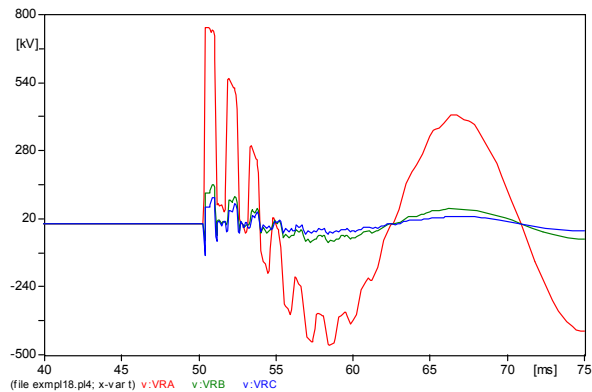
Spring 2008

**U
 I**

Voltages (1 phase energize)

ECE524

Lecture 27



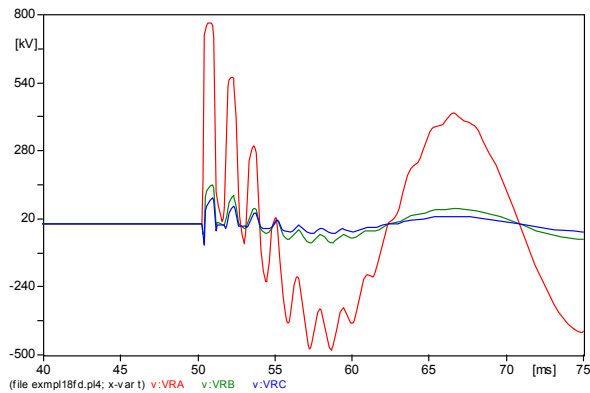
Spring 2008

U I

Voltages (1 phase energize)

ECE524

Lecture 27



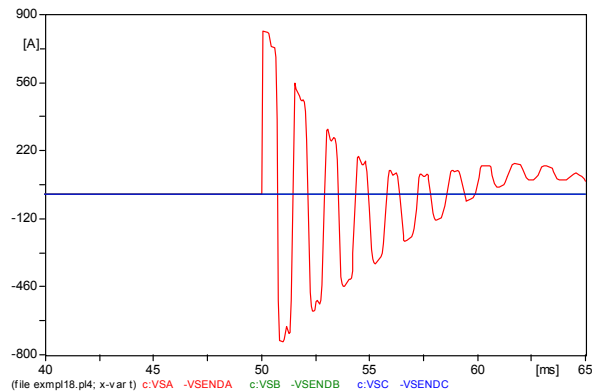
Spring 2008

U I

Currents (1 phase energize)

ECE524

Lecture 27



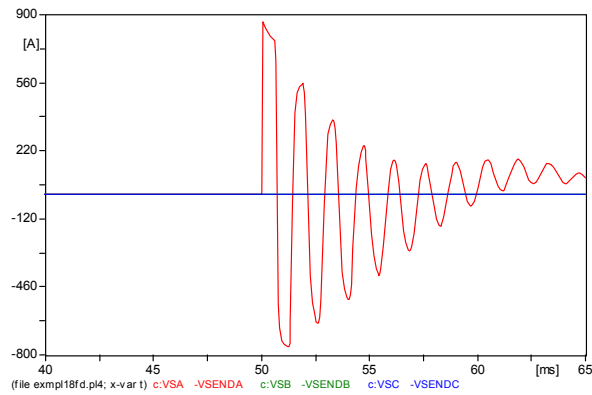
Spring 2008

U
 I

Currents (1 phase energize)

ECE524

Lecture 27



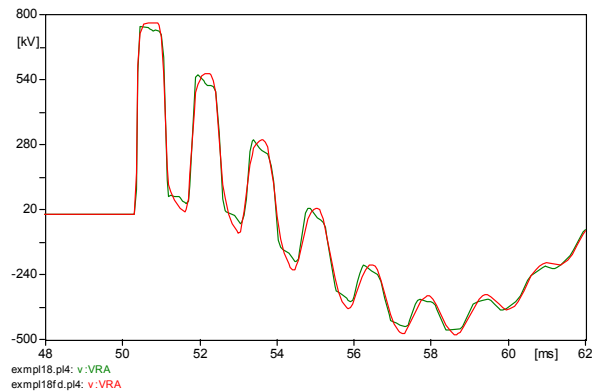
Spring 2008

U
 I

Voltages (1 phase energize)

ECE524

Lecture 27



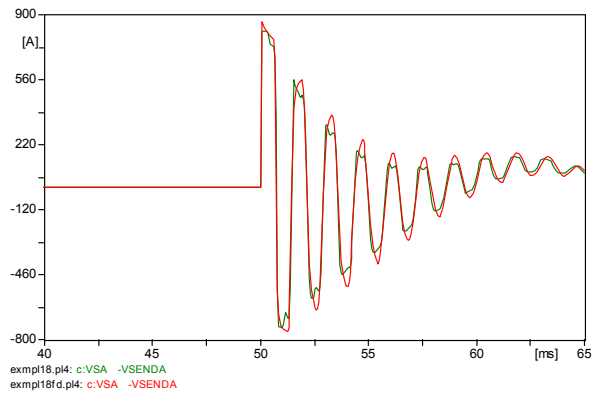
Spring 2008

U
I

Currents (3 phase energize)

ECE524

Lecture 27



Spring 2008