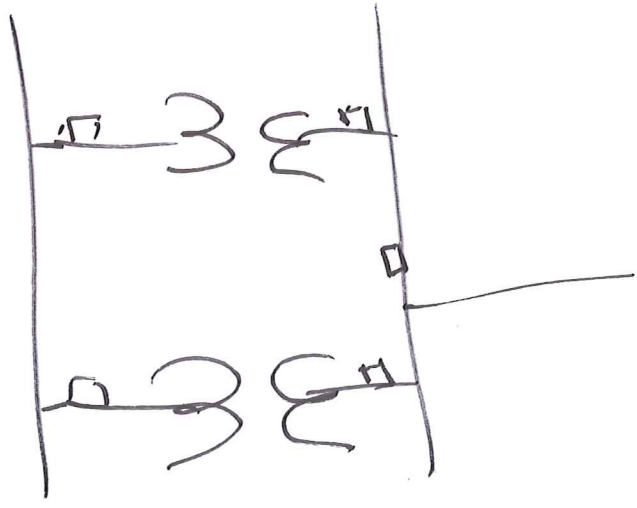
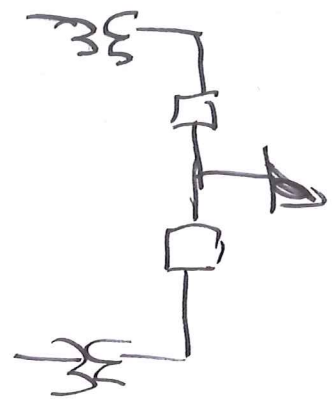
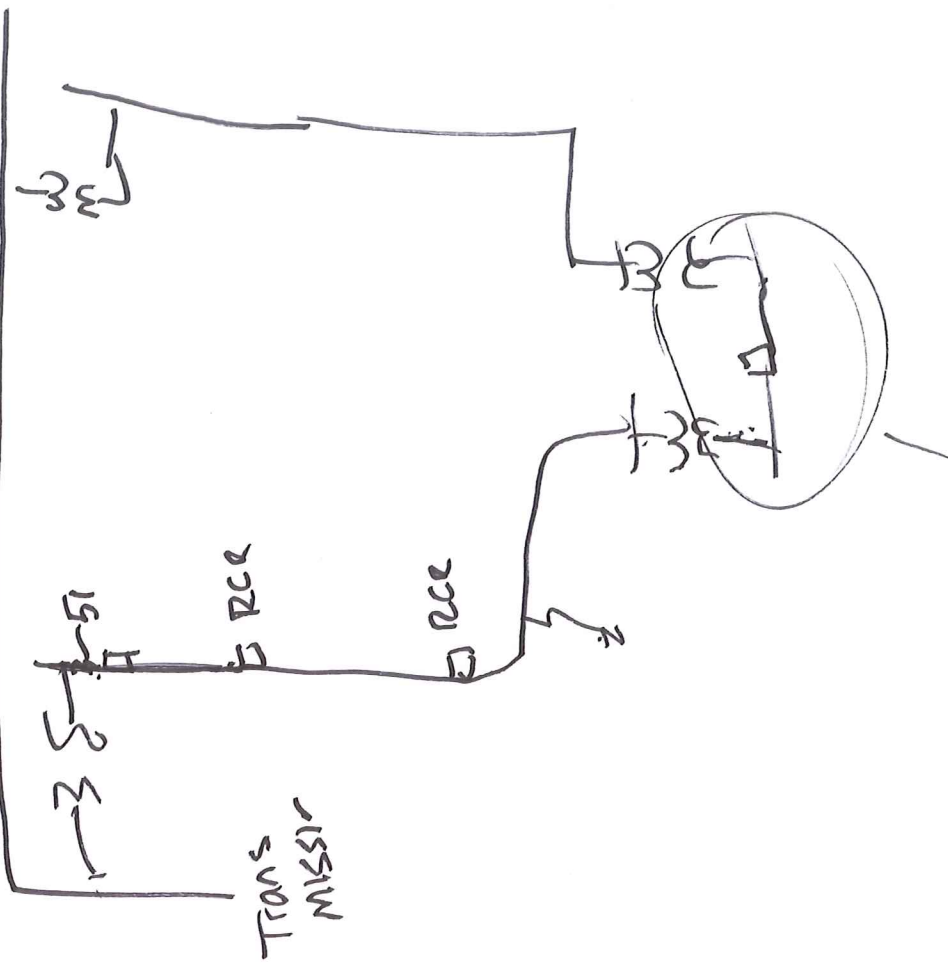
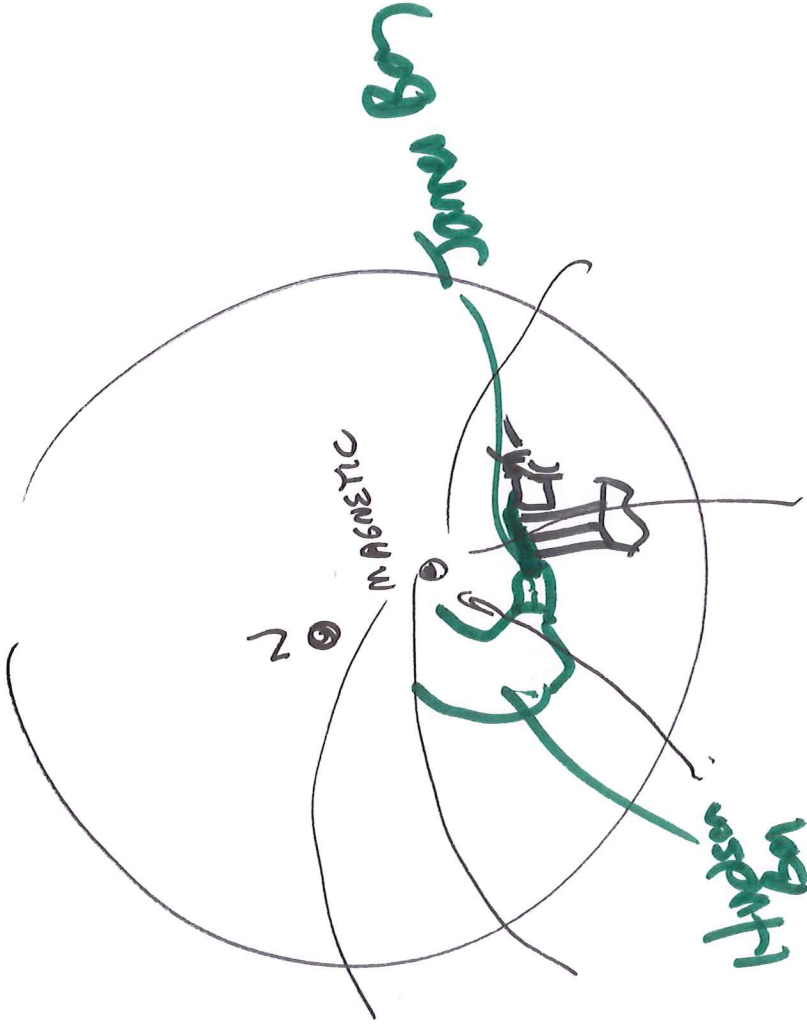


ECE 525

POWER SYSTEM PROTECTION
AND RELAYING

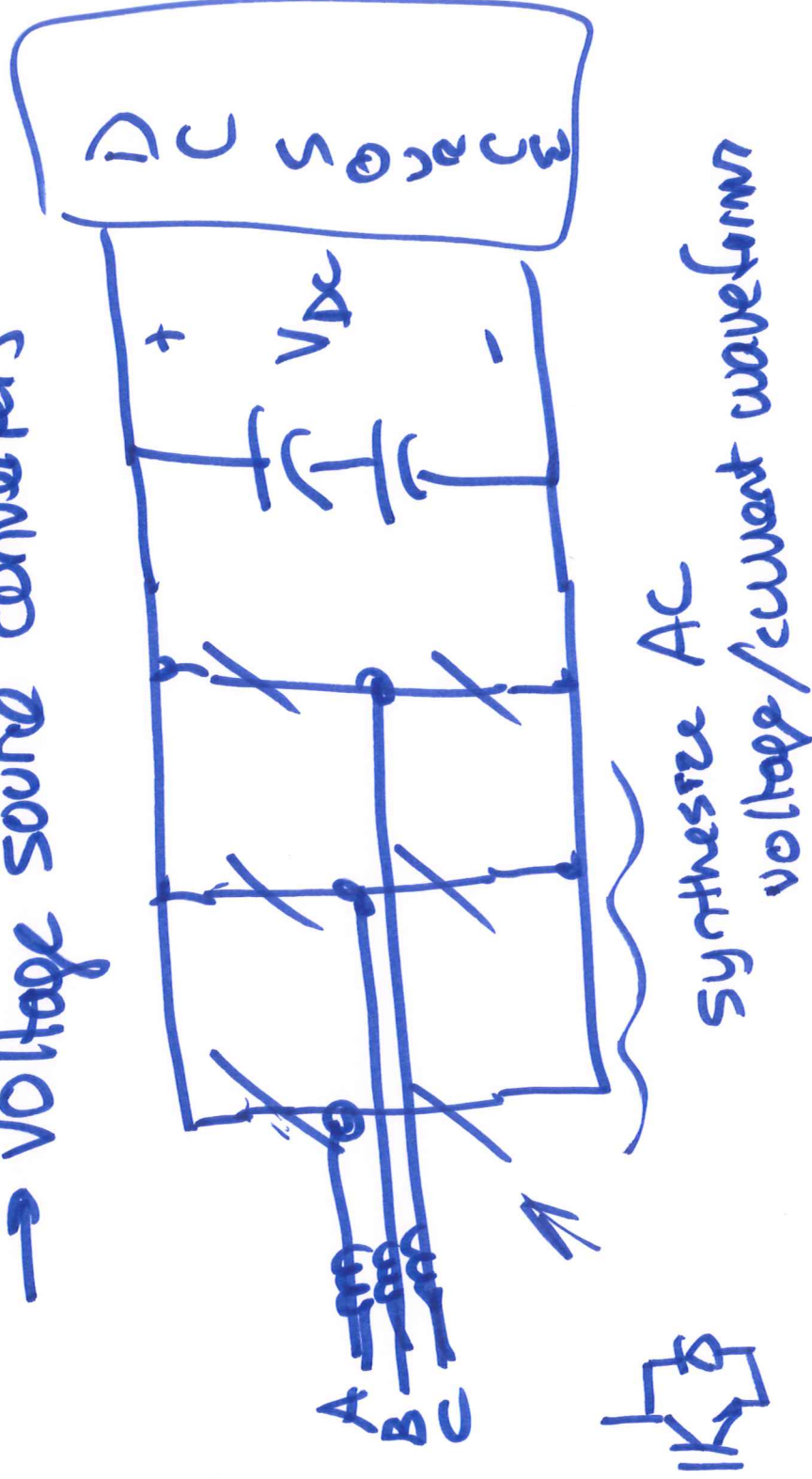
SESSION no. 30





Inverted coupled generator
impact on overcurrent elements
& directional elements

→ Voltage source converters



- fast AC current regulation

→ ① magnitude of current

limited, often to

110% - 150% of I_{rated}

on converter

→ same with residential

FV

② controls power factor

→ will maintain unity PF

during fault

- In some cases it becomes

leading

low voltage
rise through
3

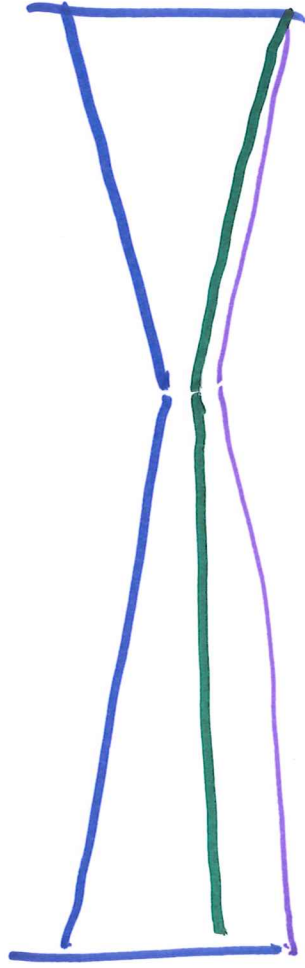
③ Actively regulate

$$|I_f| \rightarrow 0$$

④ No I_o from converter

- But step up transformer
might have ΔV_L





Wolf
prints